



# **Harrison Central**

---

# **School District**

## **Ranking & Graduation Honors**

**Harrison High School**

**November 13, 2008**



# Essential Question

How do we honor and validate the academic achievement of *all* students in Harrison High School in accord with the district's core values?

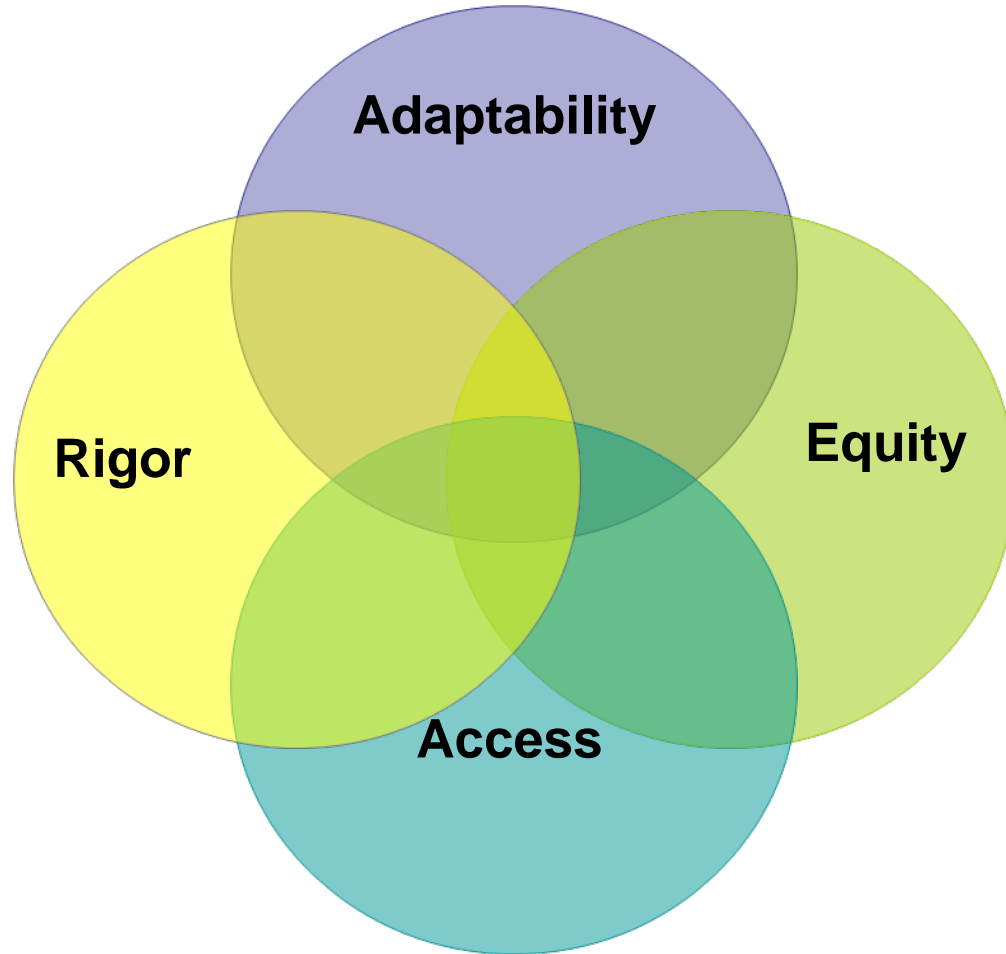


# Committee Members

- Carolyn Chieco – Guidance Counselor
- Celia Curtis – Parent
- Michael Greenfield – Assistant Superintendent for Curriculum & Instruction
- Christopher Miller – Supervisor of Guidance
- Nicole Nannariello – Student
- Nancy O'Reilly - Teacher
- Casey Rabin – Student
- Dr. James Ruck – Principal
- Jini Sachse – Parent



# Core Values





# **Committee Process**

- Studied current research concerning academic achievement, motivation & the college admissions process
- Examined longitudinal data
- Reviewed practices of other high performing high schools
- Surveyed college admissions officers



# Ranking at Harrison HS: Class Sample

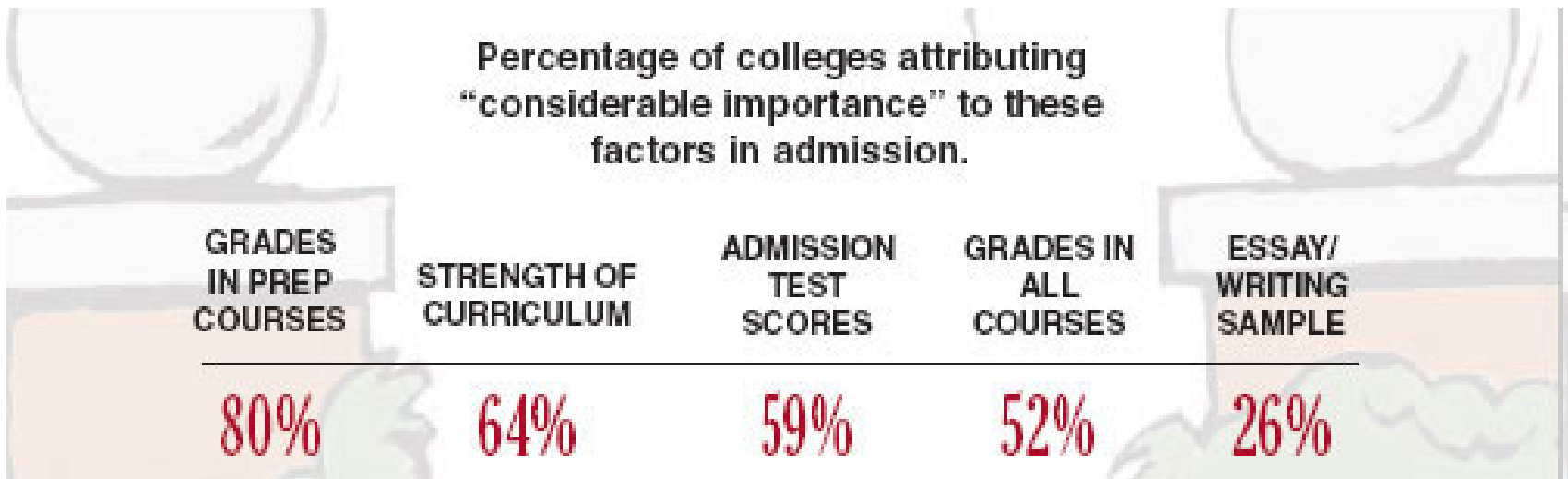
## Weighted GPAs

- Valedictorian: 101.625
- Salutatorian: 100.479
- 3<sup>rd</sup> Ranked Student: 99.795
- 4<sup>th</sup> to 10<sup>th</sup> Ranked Students: 98 or higher



# College Admissions: Key Factors

Percentage of colleges attributing  
“considerable importance” to these  
factors in admission.



*Survey by the National Association for  
College Admission Counseling, 2008*



# **Harrison Central**

---

# **School District**

## **Proposed Changes**





# Ranking

## *Current*

All students ranked by weighted GPA after six semesters

## *Proposed*

Eliminate ranking as a practice



# **Weighting of Courses**

## ***Current***

Advanced Placement (AP)  
courses weighted

Dual college enrollment  
and advanced courses  
weighted

## ***Proposed***

Continue current practice  
(IB courses will be  
weighted)



# Graduation Awards

## *Current*

Students ranked #1 and #2 in the graduating class earn the valedictorian and salutatorian distinctions respectively

## *Proposed*

Establish a tiered system for academic distinction based on weighted GPA:

| <b>Distinction</b> | <b>Weighted GPA</b> |
|--------------------|---------------------|
| Summa Cum Laude    | 98 or higher        |
| Magna Cum Laude    | 95 – 97.99          |
| Cum Laude          | 93 – 94.99          |



# **Transcript and College Profile**

## ***Current***

Transcript reports  
unweighted GPA

College Profile reports  
unweighted distribution of  
GPA by deciles

## ***Proposed***

Transcript will report both  
unweighted and weighted  
GPA

College Profile will report  
both unweighted and  
weighted distribution of  
GPA by deciles



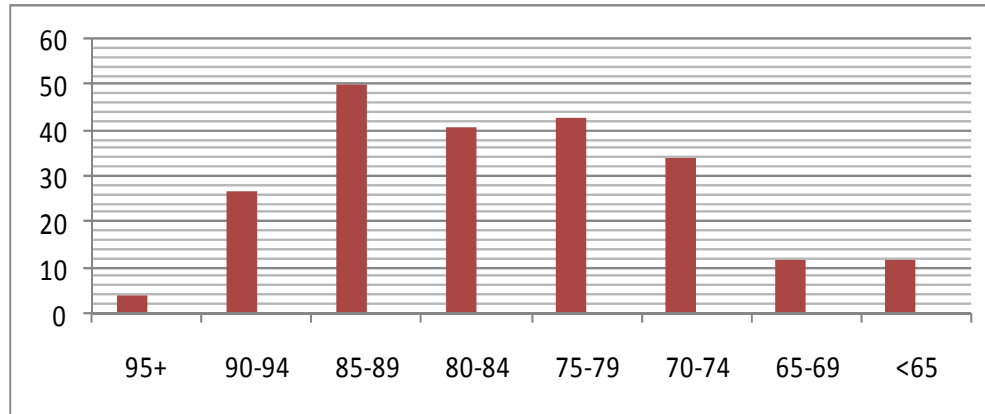
# Grade Distribution Chart

## Cumulative Unweighted Grade Distribution

Class of 2009 After Six Semesters. 223 Students. Percentages are rounded.

Highest Unweighted GPA: 97.04

Mean Unweighted GPA: 80.68



Cumulative GPA

95+  
90-94  
85-89  
80-84

Percent of Class

2%  
12%  
23%  
19%

Cumulative GPA

75-79  
70-74  
65-69  
<65

Percent of Class

20%  
16%  
3%  
3%



# Commencement Speakers

## *Current*

Valedictorian and salutatorian address the graduating class

## *Proposed*

Summa Cum Laude students will select their own commencement speakers



# **Phase-in Plan: 3 Years**

- **Class of 2010**
- **Class of 2011**
- **Class of 2012**





# **Classes of 2010 & 2011**

- Students will be ranked only for the purposes of determining the class valedictorian and salutatorian
- Tiered system of academic honors will be fully implemented
- Transcripts and College Profile will report both unweighted and weighted GPAs



# Class of 2012

- Full implementation of proposal
- Elimination of class ranking
- Tiered system of academic honors for all students
- Transcripts and College Profile will report both unweighted and weighted GPAs
- Commencement speakers selected by Summa Cum Laude students